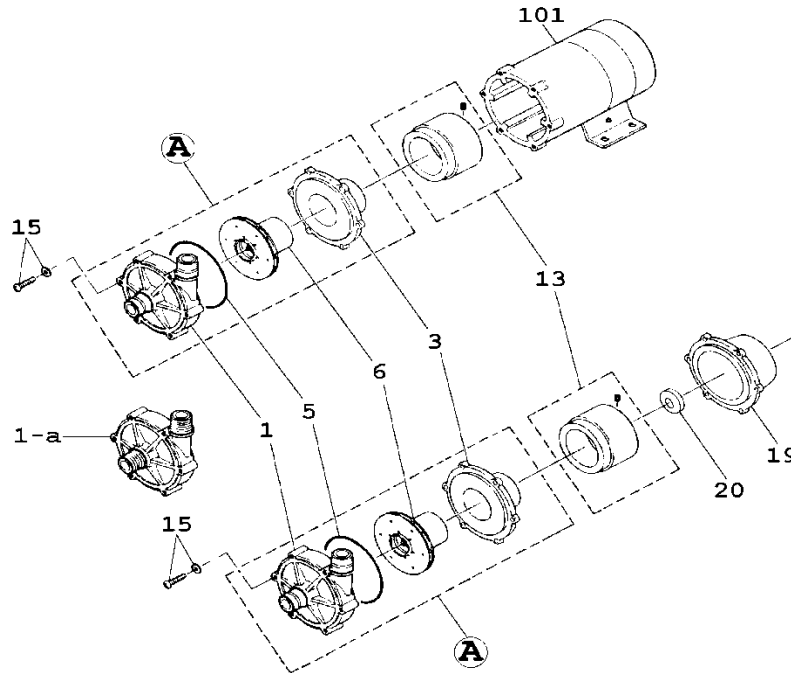




MD-55R EXPLODED
VIEW PARTS LIST

IALT00268.A

March 2014



Item	Description		Q'ty	Material	MD-55R
					Part No.
1	Front Casing (+Bearing) Unit		1	GFRPP+PTFE	MD0105
1-a	" 'T' " "	1	MD0361		
1-a	" 'M' " "	1	MD0106		
3	Rear Casing (+Bearing) Unit		1	GFRPP+PTFE	MD0111
5	O-Ring	AS568-242	1	FKM	MD0107
			1	EPDM	MD0409
6	Impeller Unit	Ø 72,5 mm	1	GFRPP+Ferrite+	MD0109
13	Drive Magnet Unit (Ø11,5mm)		1	Aluminium+Ferrite	MD0112
*13	" for IEC Motor (Ø11,0mm)		1		MD0634
15	Bolt+S.W.+P.W.	M5x50	6	SUS304 equivalent	MD0071
101	Motor [AC115V] 90W		1		1230310800
101	Motor [AC220/240V] 90W		1		1230310700
*19	Bracket for IEC Motor		1	FC200	MD0635
*20	Spacer for IEC Motor		1	Aluminium	MD0636
A	Wet End Set		1	with FKM	L-MD-55R
			1	with EPDM	L-MD-55RE
A	Wet End Set, 'T' Type		1	with FKM	L-MD-55R
			1	with EPDM	L-MD-55RTE
A	Wet End Set, 'M' Type		1	with FKM	L-MD-55RM
			1	with EPDM	L-MD-55RME

Note: Items marked with * are required to fit an IEC Motor.

Subject to change without notice. Actual pump may differ from exploded view.