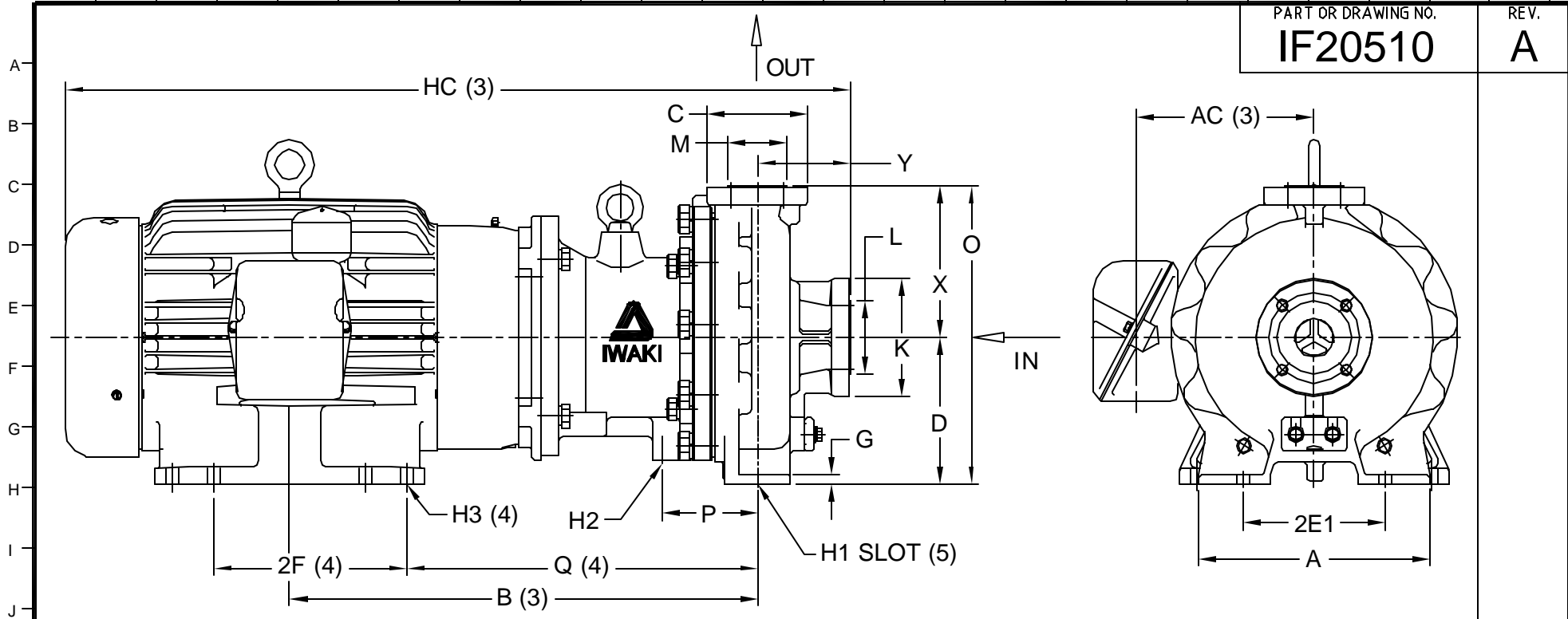



PART OR DRAWING NO. **IF20510** REV. **A**



PUMP DIMENSIONS (1)															
A	AC (3)	B (3)	D	2E1	2F (4)	G	H1 (5)	H2	H3 (4)	HC (3)	O	P	Q (4)	X	Y
9.84"	7.56"	19.97"	6.25"	6.00"	8.25"/10.00"	0.39"	0.55"	3/8"-16 UNC	0.52"	33.54"	12.75"	4.09"	14.97"	6.50"	4.00"

MODEL	HP/ FRAME	PUMP FLANGES (2)		DIMENSIONS			
		SUCTION	DISCHARGE	K	L	C	M
MDM-15182	15/254TC	1 1/2"	1"	5.00"	3.15"	4.25"	2.48"
	20/256TC						

ECO#		DESCRIPTION				DATE	REV. LTR.
PUMP WEIGHT 154 LB		WET-END/BEARING MATERIALS CFRETFFE OR PFA W/SIC					
EDT	09	07	04	CJC	1		
DRAWN	DAY	MO.	YR.	RELEASED	SHEET NO.		


 5 Boynton Rd.
 Hopping Brook Park
 Holliston, MA 01746
 (508) 429-1440
www.IwakiAmerica.com

TITLE **MDM-15182 (15 & 20 HP)** REV. **A**
 Dimensional Drawing

- NOTES AND REFERENCES:**
- (1) ALL DIMENSIONS IN INCHES. ALL TOLERANCES $\pm .125"$, CONSULT IWAKI AMERICA FOR MORE DETAILS.
 - (2) BOLT HOLE LOCATIONS OF SUCTION AND DISCHARGE FLANGES CONFORM TO ANSI B16.5 150 LB STANDARD. FLANGE BOLT HOLES HAVE 1/2" -13 UNC THREADS.
 - (3) DIMENSION MAY VARY BASED ON MOTOR MANUFACTURER.
 - (4) NEMA MG 1-1993, PART 4 USED FOR REFERENCE.
 - (5) SLOTS ARE OPEN ENDED TO FRONT OF FRAME.
 - 6 DRAWN PER 52B402898 (MDM1518-2_KKF15/20A-_2)

PART OR DWG. NO. **IF20510**