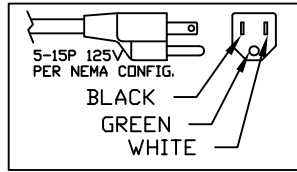
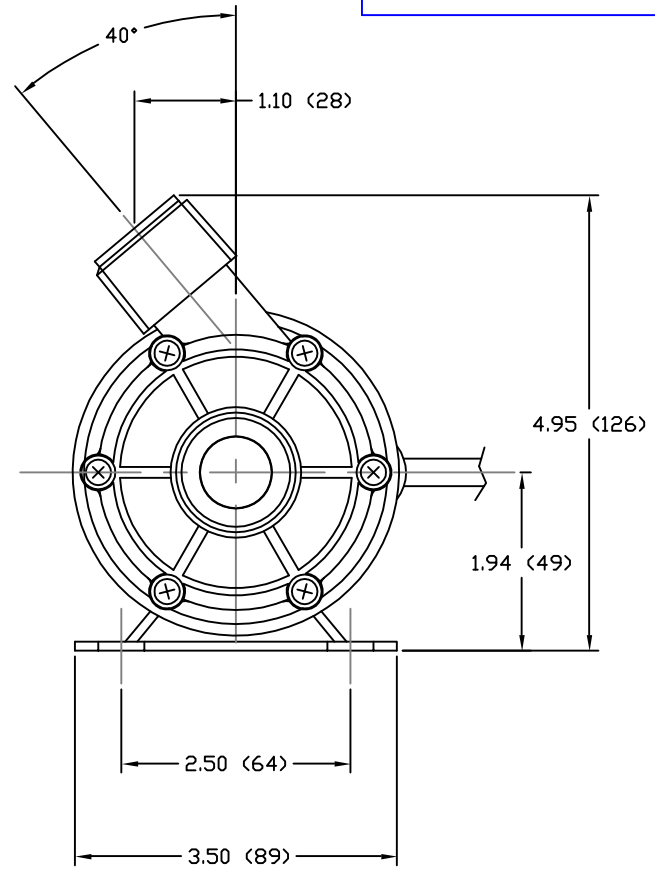
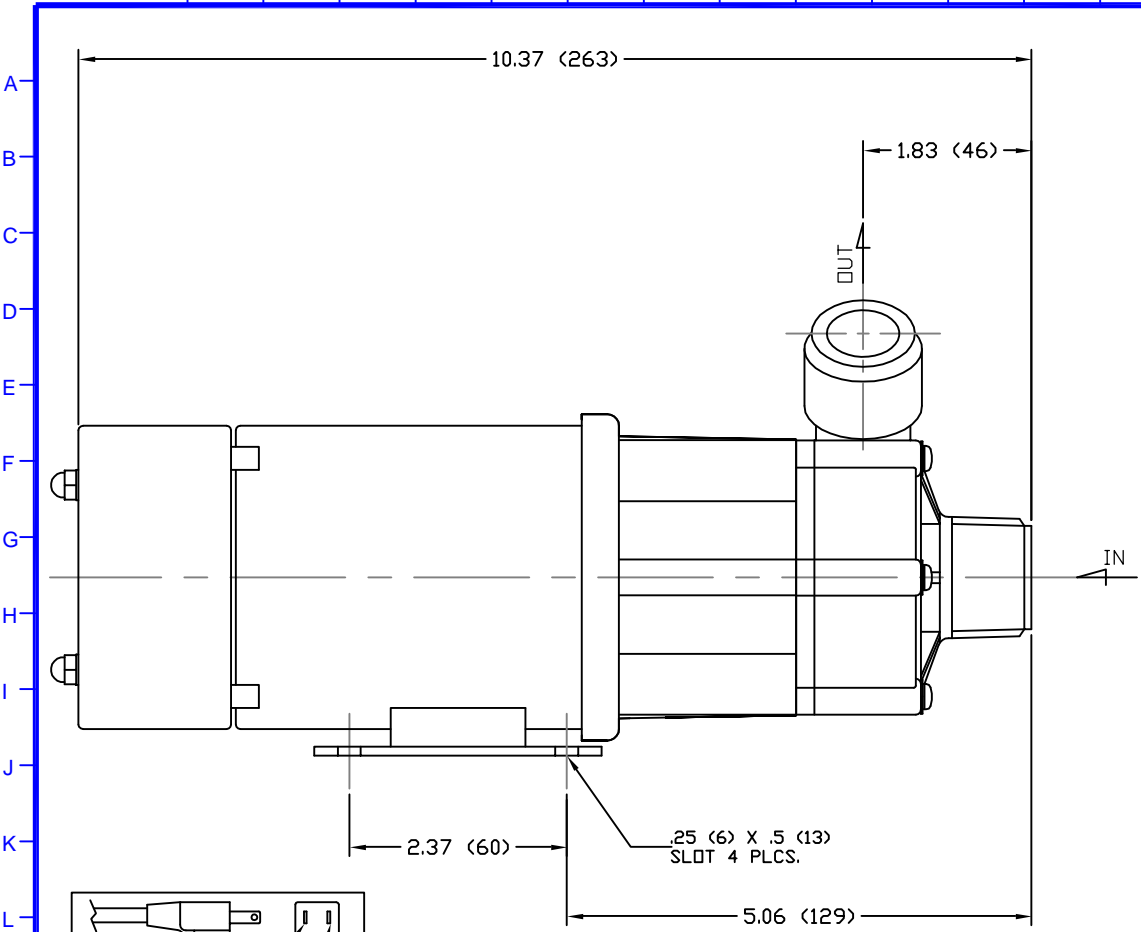


PART OR DRAWING NO.
IF20598

REV.
A



- NOTES:
1. DRAWING MAY VARY FROM ACTUAL PRODUCT.
 2. DRAWN TO SCALE PER 2Z000404.
 3. REFER TO DRAWING 54206 & 54218.
 4. DIMENSIONS ARE IN INCHES (MM).

SPECIFICATIONS

MAX CAPACITY	13.7 GPM (51.9 LPM)
MAX HEAD	8.2 FT (2.5 M)
MAWP	5.69 PSI (.04 MPA)
VOLTAGE	115 VAC
CURRENT	.5 A
CORD LENGTH	72 IN ± 2 IN (1.83 M ± .05 M)
WEIGHT	7 LBS (3.2 KG)
SUCTION	1 IN NPT - MALE
DISCHARGE	1 IN NPT - MALE

MATERIALS

CASING	GFRPP
IMPELLER	GFRPP
SPINDLE	ALUMINA CERAMIC
BEARING	PTFE
THRUST RING	ALUMINA CERAMIC
O-RING	FKM

ECO#	DESCRIPTION				DATE	REV. LTR.
MATERIAL SEE CHART						
GJS	04	04	05	XXX	1	PART OR DWG. NO. IF20598
DRAWN	DAY	MO.	YR.	RELEASED	SHEET NO.	
		5 Boynton Rd. Hopping Brook Park Holliston, MA 01746 (508) 429-1440				
		www.IwakiAmerica.com				
TITLE		MAG DRIVE PUMP WMD-20RLXT (115V)				REV. A