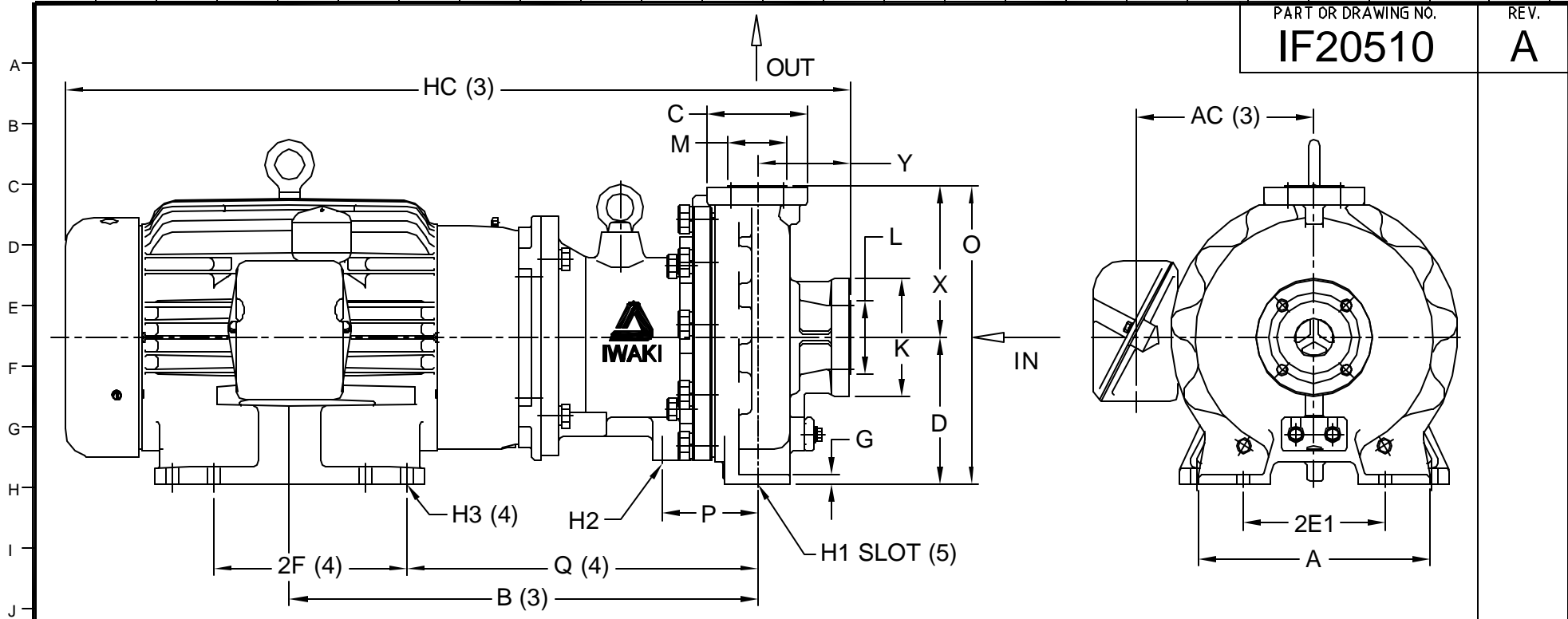


PART OR DRAWING NO. **IF20510** REV. **A**




PUMP DIMENSIONS (1)															
A	AC (3)	B (3)	D	2E1	2F (4)	G	H1 (5)	H2	H3 (4)	HC (3)	O	P	Q (4)	X	Y
9.84"	7.56"	19.97"	6.25"	6.00"	8.25"/10.00"	0.39"	0.55"	3/8"-16 UNC	0.52"	33.54"	12.75"	4.09"	14.97"	6.50"	4.00"

MODEL	HP/ FRAME	PUMP FLANGES (2)		DIMENSIONS			
		SUCTION	DISCHARGE	K	L	C	M
MDM-15182	15/254TC	1 1/2"	1"	5.00"	3.15"	4.25"	2.48"
	20/256TC						

ECO#	DESCRIPTION	DATE	REV.	L.T.R.
	PUMP WEIGHT 154 LB	WET-END/BEARING MATERIALS CFRETFFE OR PFA W/SIC		

EDT	09	07	04	CJC	1
DRAWN	DAY	MO.	YR.	RELEASED	SHEET NO.


 5 Boynton Rd.  
 Hopping Brook Park  
 Holliston, MA 01746  
 (508) 429-1440  
[www.IwakiAmerica.com](http://www.IwakiAmerica.com)

TITLE	REV.
<b>MDM-15182 (15 &amp; 20 HP)</b> Dimensional Drawing	<b>A</b>

**NOTES AND REFERENCES:**

- (1) ALL DIMENSIONS IN INCHES. ALL TOLERANCES  $\pm .125"$ , CONSULT IWAKI AMERICA FOR MORE DETAILS.
- (2) BOLT HOLE LOCATIONS OF SUCTION AND DISCHARGE FLANGES CONFORM TO ANSI B16.5 150 LB STANDARD. FLANGE BOLT HOLES HAVE 1/2" -13 UNC THREADS.
- (3) DIMENSION MAY VARY BASED ON MOTOR MANUFACTURER.
- (4) NEMA MG 1-1993, PART 4 USED FOR REFERENCE.
- (5) SLOTS ARE OPEN ENDED TO FRONT OF FRAME.
- 6 DRAWN PER 52B402898 (MDM1518-2\_KKF15/20A-\_2)

PART OR DWG. NO. **IF20510**

REV. **A**